

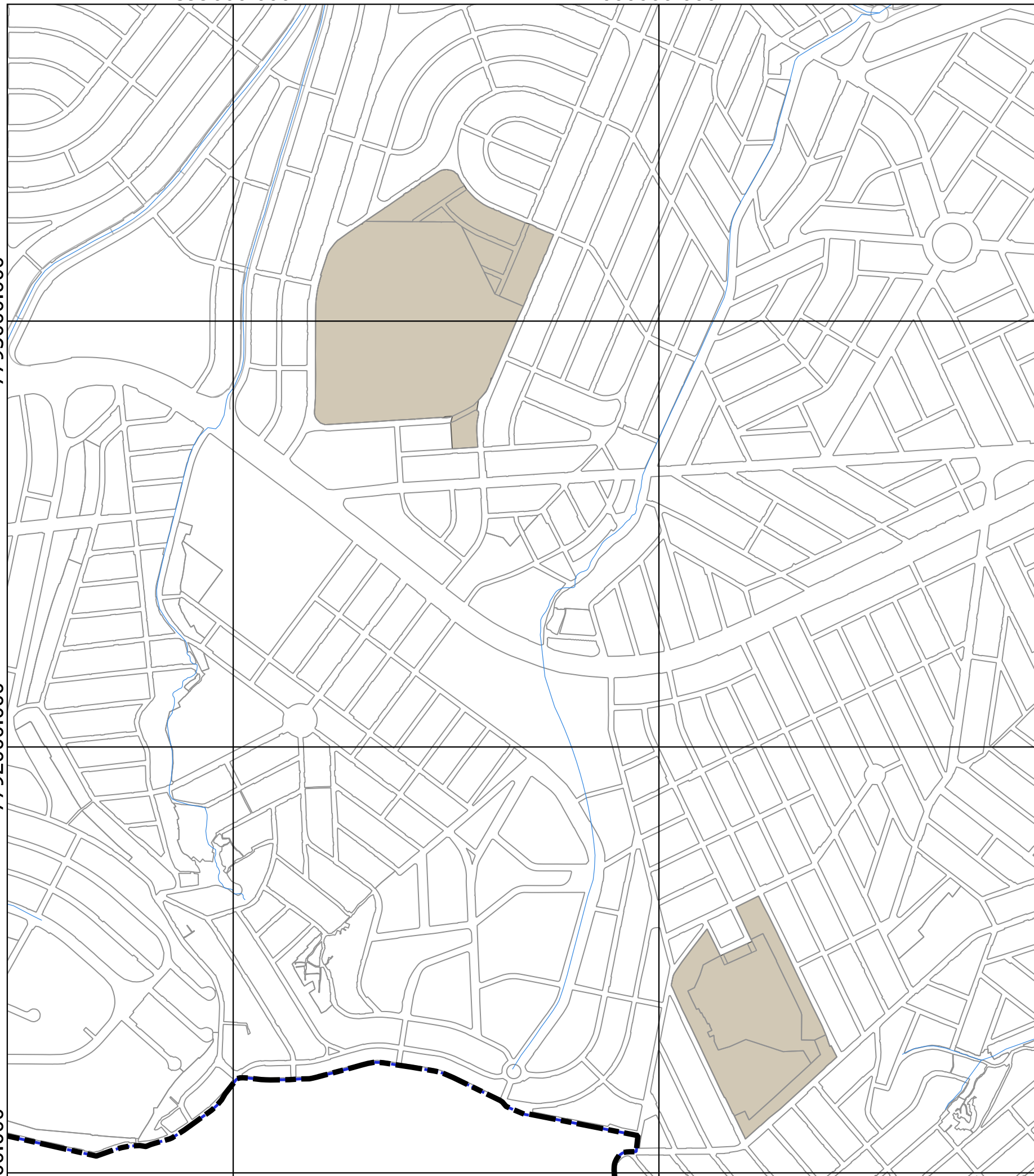
599000.000

600000.000

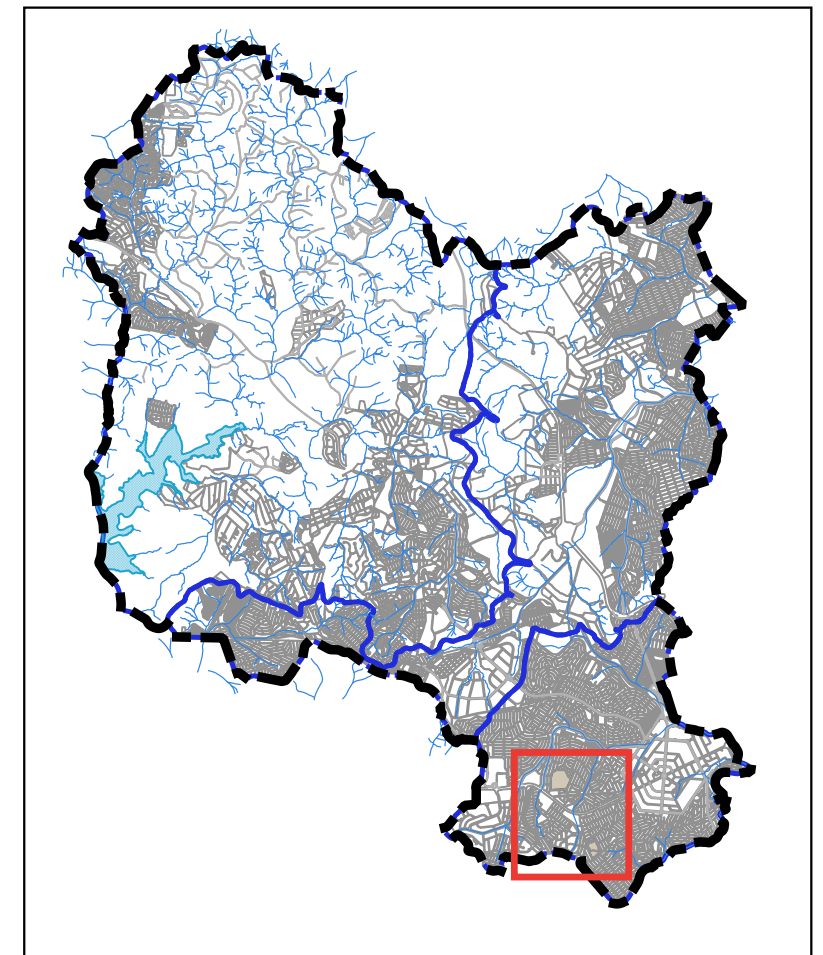
7793000.000

7792000.000






791000.000



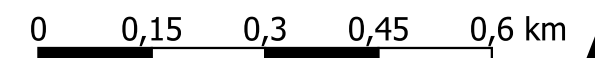
**PLANO DIRETOR DE CONTAGEM**  
 LEI COMPLEMENTAR 362 / 2023  
 ANEXO IV.6 - ADE CULTURAL DAS PEDREIRAS



**LEGENDA**

-  ADE CULTURAL DAS PEDREIRAS
-  Lagoa Vargem das Flores
-  Limite Municipal
-  Hidrografia
-  Bacias Hidrograficas

PREFEITURA MUNICIPAL DE CONTAGEM  
 SECRETARIA MUNICIPAL DE DESENVOLVIMENTO  
 URBANO E HABITAÇÃO



DATUM SIRGAS 2000

